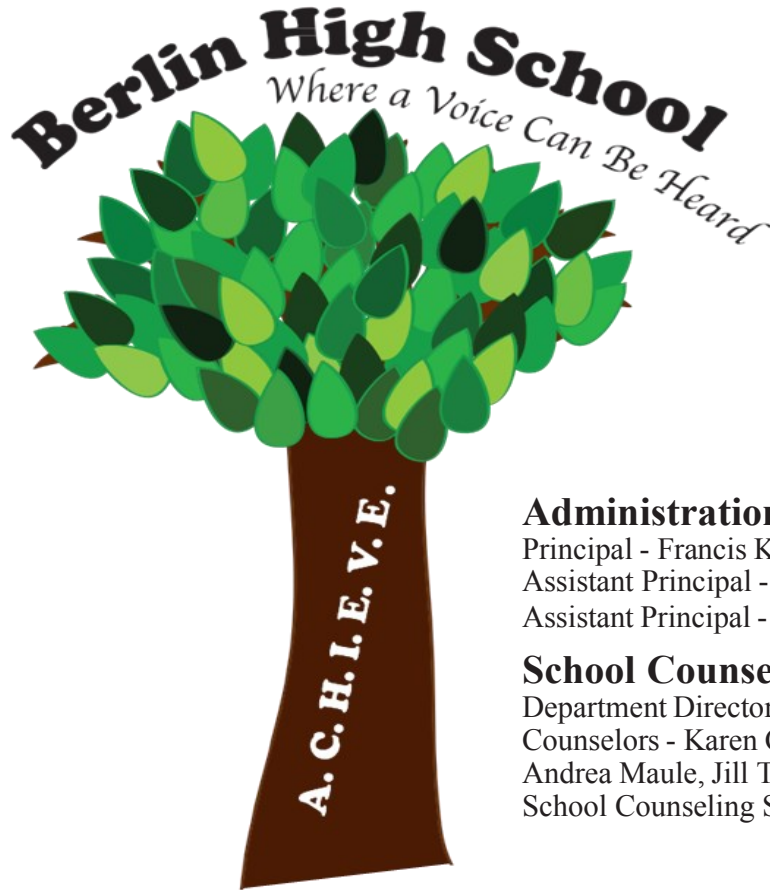




2013-2014 School Profile

139 Patterson Way, Berlin CT 06037 • School Code: 070020
Phone: 860-828-6577 • Fax: 860-829-2268 • www.berlinwall.org



Administration:

Principal - Francis Kennedy
Assistant Principal - Amanda Gagnon
Assistant Principal - Timothy Grady

School Counseling Personnel:

Department Director - Deborah Ramirez
Counselors - Karen Crawford, Patricia Pires
Andrea Maule, Jill Taradeina
School Counseling Secretary - Mary Pacyna

MISSION STATEMENT

Berlin High School is a partnership of students, staff, parents, and community members whose mission is to develop responsible, ethical, and productive citizens and lifelong learners. Together, we are actively engaged in acquiring theoretical, technological, and practical knowledge in a secure and supportive environment. Berlin High School challenges students to think, both creatively and critically, in a rigorous academic setting. We encourage students to understand, accept, and appreciate the diverse nature of society. The school community is a positive social environment that affords all students the opportunity to explore their potential as individuals.

SCHOOL

Berlin High School is a four year comprehensive high school. It is accredited through the New England Association of Schools and Colleges. Berlin High School provides approximately 980 students with an extensive curricular program of studies along with a wide range of co-curricular opportunities. Berlin High School helps all students A.C.H.I.E.V.E. by acknowledging and supporting student interests and abilities in academics, vocational courses, fine arts, and special education opportunities.

COMMUNITY

Berlin is the geographic center of Connecticut, south of Hartford. With a population of approximately 20,000, it is both a residential and industrial community. Residents of the community are employed in professional, skilled, and semi-skilled occupations. The hamlets of Kensington, Berlin, and East Berlin comprise the community.

The Board of Education governs three elementary schools, one middle school, and one high school.

Berlin High School
Home of the Redcoats
“Where A Voice Can Be Heard”

Staff

Berlin High School employs 72 regular education classroom teachers, and the average student-teacher ratio is 20:1. Additional staff include 3 administrators, 4 school counselors, 1 district supervisor of school counseling, 1.5 school psychologists, 2 social workers, 12 special educators, 1 speech/language specialist, 1 ESOL educator, 1 reading specialist, 1 library/media specialist, and 1 athletic director.

Graduation Requirements

English	4.0
Mathematics	4.0
Social Studies	3.5
<i>(US History 1 cr. and Civics 1/2 cr.)</i>	
Science	3.5 <i>(including Biology)</i>
PE/Health	2.0
Additional credits	9.0 <i>(1 art/vocational)</i>
Total: 26 credits	

Starting with the Class of 2015, students will need 27 credits in order to graduate, which will require 4 credits in English, 4 credits in Mathematics, 4 credits in Science, 3.5 credits in Social Studies, and 9.5 elective credits.

Additionally: Students must meet the performance standard of Goal/Advanced for graduation in Mathematics, Science, Reading, and Writing on the Connecticut Academic Performance Test (CAPT).

Seniors must also complete a year long Capstone Project.

AP/UCONN ECE Courses

- AP/UCONN Biology
- AP/UCONN Calculus I/II
- AP/UCONN Chemistry
- AP/UCONN English Literature
- AP/UCONN Physics
- AP Language and Composition
- AP Music Theory
- AP Psychology
- AP Studio Art
- AP U.S. History
- AP World History
- UCONN Drawing
- UCONN Discrete Math
- UCONN Intro to Individual/Family Development
- UCONN Spanish V
- UCONN Statistics

Course Levels

2013-2014 courses at Berlin High School are offered on four levels: **College Preparatory, Advanced, Honors, and AP/UCONN Early College Experience.** Additionally, co-taught courses are offered with the assistance of our special education teachers, who are partnered with regular education faculty.

GPA and Class Rank

- Grading is calculated by a numerical system 0-100.
- The Minimum Passing Grade is 60%.
- Sequential advanced/honors courses have prerequisites.

Transcript averages include final marks in subjects 9-12. Length of course is taken into consideration. A 5-point differential is added to “advanced” courses and an 8-point differential is added to “honors” and “AP/UCONN ECE” courses in the calculation of class rank.

Grading System

A = 100-90, B = 89-80, C = 79-70, D = 69-60, F = 59 and below

Post High School Plans: Class of 2013

Total College (2 & 4 Yr.)	91.3%	Other Schools	2.0%
4 Year College	74.4%	Military	1.2%
2 Year College	16.9%	Employment	1.2%
		Unknown	6.3%

2013 SAT Mean Scores

	Berlin	CT	National
Critical Reading	502	508	496
Math	526	512	514
Writing	516	512	488

2013 Berlin High School Student Highlights And Accomplishments

Advanced Placement Exams May 2013

Score Distribution	5	4	3	Total Exams		
Biology	6	12	24	44		
Calculus AB	3	6	11	24		
Chemistry	4	2	7	19		
English Language	6	8	31	65		
English Literature	5	11	8	31		
Physics B	1	1		3		
Psychology	15	11	5	33		
Statistics			2	2		
Studio Art: 2-D Design		1	1	2		
Studio Art: Drawing		1	1	6		
US History	1	7	14	41		
World History			1	1		
School Totals:	5	4	3	2	1	Total Exams
Number of Exams	41	60	105	53	14	273
Percentage of Totals	15	22	38	19	5	100

Academic and Community Service Recognition: Class of 2013

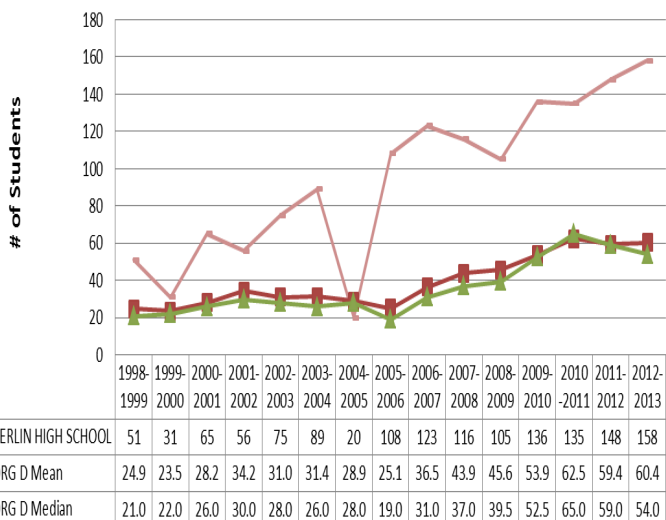
**32 graduates received
Academic/Honors Citations**

**60 graduates received Community
Service Citations**

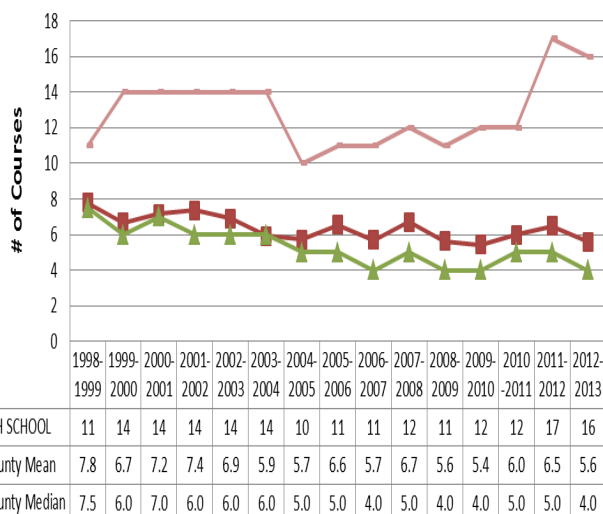
National Honor Society

Berlin High School hosts a chapter of the National Honor Society and elects students based on scholarship, character, leadership, and service. **75** seniors were participating members in 2012-2013.

UConn Early College Experience Student Enrollment (by DRG)



UConn Early College Experience Courses Offered



CLASS OF 2013 COLLEGE ACCEPTANCES

Albertus Magnus College	Emmanuel College	University of Mass. Amherst	Salve Regina University
Alfred University	Endicott College	University of Mass. Boston	San Diego State University
Allegheny College	Fairfield University	Merrimack College	School of Visual Art
American International College	University of Findlay	Messiah College	University of Scranton
Arcadia University	Fisher College	University of Miami	Seton Hall University
University of Arizona	Fitchburg State University	Middlesex Comm.College	Sienna College
Arizona State University	Florida Atlantic University	Montserrat College of Art	Simmons College
Assumption College	Florida International University	Mount Holyoke College	Skidmore College
Babson College	Florida State University	Mount Saint Mary's Univ.	University of So. Florida Tampa
Barry University	Fordham University	Muhlenberg College	Southern Ct. State University
Bay Path College	Franklin Pierce University	New England College	Springfield College
Becker College	George Washington Univ.	University of New Hampshire	St. Bonaventure University
Belmont University	Gettysburg College	University of New Haven	St. John's University Queens
Bentley University	Goodwin College	New York University	St. Lawrence University
Boston College	Gordon College	Newbury College	St. Mary's College Maryland
Boston University	Grand Valley State University	Nichols College	Stevenson University
University of Bridgeport	University of Hartford	University of North Carolina	Stonehill College
Brown University	Hartwick College	Northeastern University	Stony Brook University
Bryant University	Harvard College	Norwich University	Suffolk University
University of California	High Point University	Pace University	SUNY - Albany
Carnegie Mellon University	Hofstra University	Pennsylvania State University	Syracuse University
Capital Community College	College of the Holy Cross	Philadelphia University	University of Tampa
Case Western Reserve Univ.	Iona College	University of Pittsburgh	Towson University
Castleton State College	Ithaca College	Plymouth State University	Trinity College
Central Ct. State University	Keene State College	Providence College	Tulane University
Champlain College	University of Kentucky	Queens University of Charlotte	Tunxis Community College
Clarkson University	Keuka College	Quinnipiac University	University of St. Joseph
Coastal Carolina University	Lasell College	Regis College	Ursinus College
University of Colorado Boulder	Le Moyne College	Rensselaer Poly Tech Institute	University of Vermont
Colorado College	Lehigh University	Rhode Island College	Villanova University
CT Center for Massage Therapy	Lesley University	University of Rhode Island	Wentworth Inst. of Technology
Connecticut College	Lincoln College of New England	Rochester Inst. of Technology	West Virginia University
University of Connecticut	Lincoln Technical Institute	University of Rochester	Western Ct. State University
Curry College	Long Island University Post	Roger Williams University	Western Michigan University
University of Delaware	Loyola University Maryland	Rollins College	Western New England
Drew University	Lynchburg College	Rowin University	Westfield State University
Drexel University	University of Maine	Rutgers University	Wheaton College
Duquesne University	Manhattan College	Sacred Heart University	William Patterson University
Eastern Ct. State University	Marist College	Saint Anselm College	Worcester Poly Tech Institute
Elizabethtown College	Univ. of Maryland Baltimore	Saint Joseph University	Yale University
Elms College	Univ. of Maryland College Park	Saint Leo University	
Elon University	Marywood University	The College of Saint Rose	
Embry-Riddle University	Massachusetts College of	Salem State University	
Emerson College	Pharmacy/Health Sciences	Salisbury University	

A.C.H.I.E.V.E.

Academic Success - Community Involvement - Healthy Lifestyle - Individual Responsibility - Ethical Citizenship
Value Creativity - Explore Potential